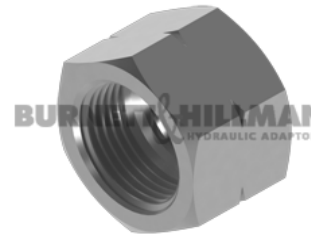
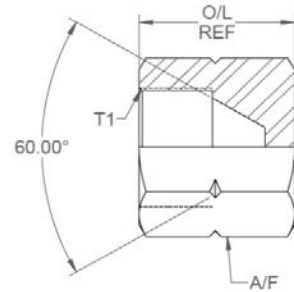


A/F dimensions are imperial unless stated.



	T1	O/L	A/F
9721-14	M14 x 1.5	0.875 "	19mm
9721-18	M18 x 1.5	0.944 "	22mm
9721-22	M22 x 1.5	1.200 "	27mm
9721-24	M24 x 1.5	1.150 "	30mm
9721-30	M30 x 1.5	1.150 "	1.5
9721-33	M33 x 1.5	1.150 "	41mm

	T1	O/L	A/F
9721-14	M14 x 1.5	22.23 mm	19mm
9721-18	M18 x 1.5	23.98 mm	22mm
9721-22	M22 x 1.5	30.48 mm	27mm
9721-24	M24 x 1.5	29.21 mm	30mm
9721-30	M30 x 1.5	29.21 mm	1.5
9721-33	M33 x 1.5	29.21 mm	41mm

DESIGN DETAILS AND SPECIFICATIONS SUBJECT TO CHANGE WITHOUT PRIOR NOTICE - Whilst every effort has been made to ensure the accuracy of the information supplied herein, Burnett & Hillman cannot be held responsible for any errors or omissions (E&OE)