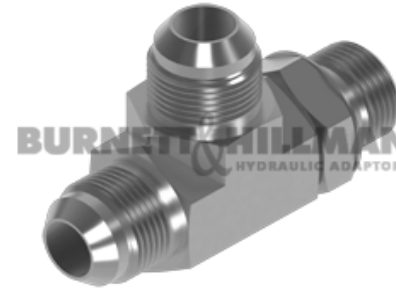
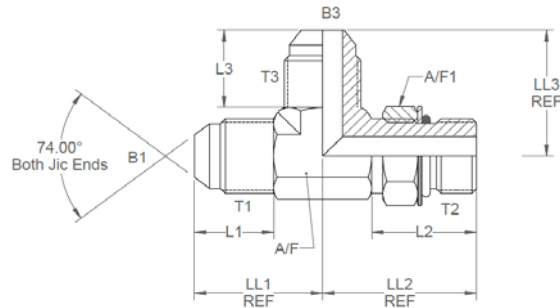
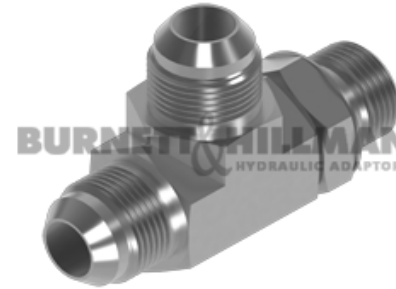
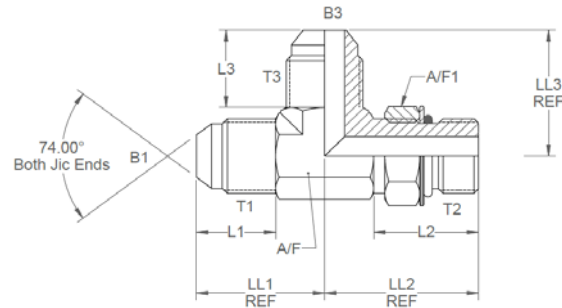


All dimensions are imperial unless stated.



	T1	T2	T3	B1	B3	L1	L2	L3	LL1	LL2	LL3	A/F	A/F1
10716-04-04-04	7/16	7/16	7/16	0.172	0.172	0.535	0.807	0.535	0.89	1.03	0.89	0.438	0.562
10716-05-05-05	1/2	1/2	1/2	0.234	0.234	0.535	0.881	0.535	0.95	1.13	0.95	0.562	0.625
10716-06-06-06	9/16	9/16	9/16	0.297	0.297	0.541	0.881	0.541	1.06	1.25	1.06	0.562	0.687
10716-08-08-08	3/4	3/4	3/4	0.391	0.391	0.642	1.027	0.642	1.25	1.45	1.25	0.75	0.875
10716-10-10-10	7/8	7/8	7/8	0.484	0.484	0.743	1.188	0.743	1.45	1.7	1.45	0.875	1
10716-12-12-12	1-1/16	1-1/16	1-1/16	0.609	0.609	0.849	1.33	0.849	1.66	1.94	1.66	1.062	1.25
10716-14-14-14	1-3/16	1-3/16	1-3/16	0	0	0	0	0	0	0	0	0	0
10716-16-16-16	1-5/16	1-5/16	1-5/16	0.844	0.844	0.896	1.362	0.896	1.81	2.05	1.81	1.312	1.5
10716-20-20-20	1-5/8	1-5/8	1-5/8	1.078	1.078	0.943	1.362	0.943	2.06	2.25	2.06	1.625	1.875
10716-24-24-24	1-7/8	1-7/8	1-7/8	0	0	0	0	0	0	0	0	0	0

A/F dimensions are imperial unless stated.



	T1	T2	T3	B1	B3	L1	L2	L3	LL1	LL2	LL3	A/F	A/F1
10716-04-04-04	7/16	7/16	7/16	4.37	4.37	13.59	20.5	13.59	22.61	26.16	22.61	0.438	0.562
10716-05-05-05	1/2	1/2	1/2	5.94	5.94	13.59	22.38	13.59	24.13	28.7	24.13	0.562	0.625
10716-06-06-06	9/16	9/16	9/16	7.54	7.54	13.74	22.38	13.74	26.92	31.75	26.92	0.562	0.687
10716-08-08-08	3/4	3/4	3/4	9.93	9.93	16.31	26.09	16.31	31.75	36.83	31.75	0.75	0.875
10716-10-10-10	7/8	7/8	7/8	12.29	12.29	18.87	30.18	18.87	36.83	43.18	36.83	0.875	1
10716-12-12-12	1-1/16	1-1/16	1-1/16	15.47	15.47	21.56	33.78	21.56	42.16	49.28	42.16	1.062	1.25
10716-14-14-14	1-3/16	1-3/16	1-3/16	0	0	0	0	0	0	0	0	0	0
10716-16-16-16	1-5/16	1-5/16	1-5/16	21.44	21.44	22.76	34.59	22.76	45.97	52.07	45.97	1.312	1.5
10716-20-20-20	1-5/8	1-5/8	1-5/8	27.38	27.38	23.95	34.59	23.95	52.32	57.15	52.32	1.625	1.875
10716-24-24-24	1-7/8	1-7/8	1-7/8	0	0	0	0	0	0	0	0	0	0