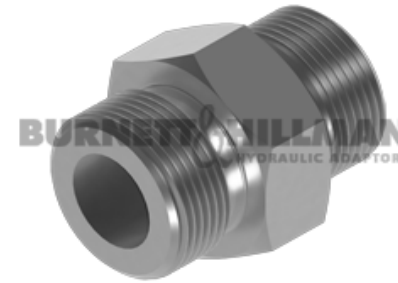
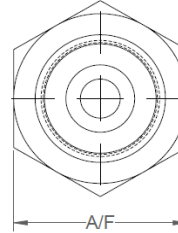
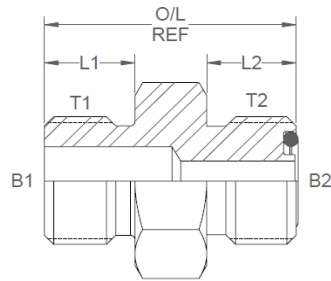


All dimensions are imperial unless stated.



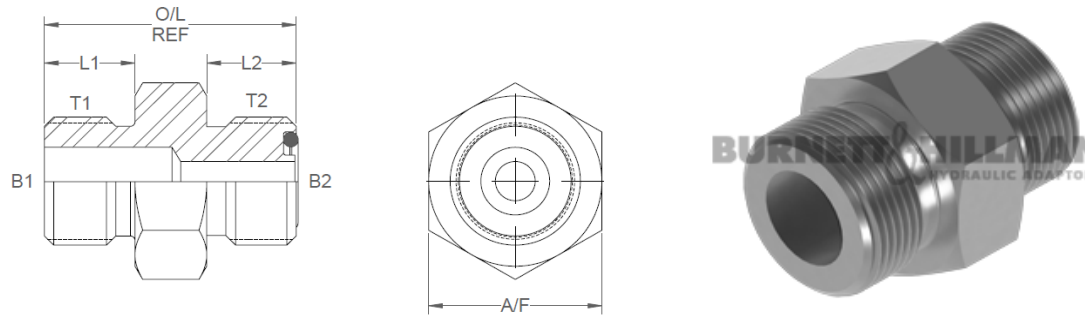
| | T1 | T2 | B1 | B2 | L1 | L2 | O/L | A/F |
|-------|--------|--------|-------|-------|-------|-------|-------|-------|
| 21300 | 7/16 | 9/16 | 0.172 | 0.172 | 0.433 | 0.386 | 1.133 | 0.625 |
| 21301 | 7/16 | 11/16 | 0.172 | 0.264 | 0.433 | 0.441 | 1.343 | 19mm |
| 21319 | 9/16 | 9/16 | 0.297 | 0.172 | 0.472 | 0.386 | 1.208 | 19mm |
| 21302 | 9/16 | 11/16 | 0.264 | 0.264 | 0.472 | 0.441 | 1.252 | 19mm |
| 21303 | 9/16 | 13/16 | 0.264 | 0.378 | 0.472 | 0.504 | 1.472 | 0.875 |
| 21304 | 3/4 | 11/16 | 0.391 | 0.264 | 0.551 | 0.441 | 1.381 | 0.875 |
| 21305 | 3/4 | 13/16 | 0.378 | 0.378 | 0.551 | 0.504 | 1.441 | 0.875 |
| 21306 | 3/4 | 1 | 0.391 | 0.484 | 0.438 | 0.61 | 1.508 | 27mm |
| 21322 | 3/4 | 1-3/16 | 0.391 | 0.609 | 0.551 | 0.67 | 1.911 | 1.25 |
| 21318 | 7/8 | 11/16 | 0.484 | 0.264 | 0.63 | 0.441 | 1.411 | 27mm |
| 21307 | 7/8 | 13/16 | 0.378 | 0.378 | 0.63 | 0.504 | 1.524 | 27mm |
| 21308 | 7/8 | 1 | 0.484 | 0.484 | 0.63 | 0.61 | 1.7 | 27mm |
| 21317 | 7/8 | 1-3/16 | 0.484 | 0.609 | 0.63 | 0.67 | 2.04 | 1.25 |
| 21320 | 1-1/16 | 13/16 | 0.609 | 0.378 | 0.728 | 0.504 | 1.75 | 1.25 |
| 21309 | 1-1/16 | 1 | 0.609 | 0.484 | 0.728 | 0.61 | 1.858 | 1.25 |
| 21310 | 1-1/16 | 1-3/16 | 0.609 | 0.609 | 0.728 | 0.67 | 1.918 | 1.25 |
| 21311 | 1-1/16 | 1-7/16 | 0.609 | 0.811 | 0.728 | 0.689 | 2.138 | 1.5 |
| 21312 | 1-5/16 | 1-3/16 | 0.844 | 0.609 | 0.728 | 0.67 | 1.958 | 1.5 |
| 21313 | 1-5/16 | 1-7/16 | 0.844 | 0.811 | 0.728 | 0.689 | 1.978 | 1.5 |
| 21314 | 1-5/8 | 1-7/16 | 1.078 | 0.811 | 0.728 | 0.689 | 2.058 | 46mm |

DESIGN DETAILS AND SPECIFICATIONS SUBJECT TO CHANGE WITHOUT PRIOR NOTICE - Whilst every effort has been made to ensure the accuracy of the information supplied herein, Burnett & Hillman cannot be held responsible for any errors or omissions (E&OE)

SAE O'ring boss male x ORFS male
Complete with O'rings & Caps

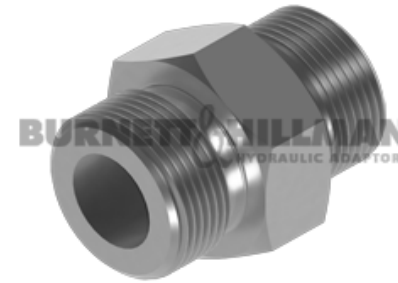
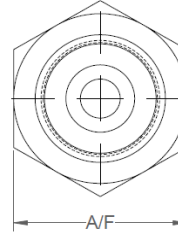
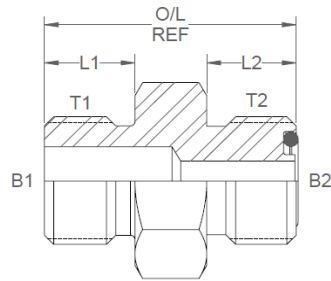
Nov-21
0902 IMP

All dimensions are imperial unless stated.



| | T1 | T2 | B1 | B2 | L1 | L2 | O/L | A/F |
|-------|-------|---------|-------|-------|-------|-------|-------|-------|
| 21315 | 1-5/8 | 1-11/16 | 1.024 | 1.024 | 0.728 | 0.689 | 2.058 | 50mm |
| 21321 | 1-7/8 | 1-11/16 | 1.312 | 1.024 | 0.594 | 0.689 | 1.933 | 55mm |
| 21316 | 1-7/8 | 2 | 1.26 | 1.26 | 0.728 | 0.689 | 2.128 | 2.125 |

A/F dimensions are imperial unless stated.



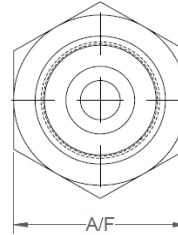
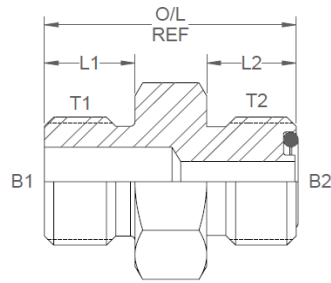
| | T1 | T2 | B1 | B2 | L1 | L2 | O/L | A/F |
|-------|--------|--------|-------|-------|-------|-------|-------|-------|
| 21300 | 7/16 | 9/16 | 4.37 | 4.37 | 11 | 9.8 | 28.78 | 0.625 |
| 21301 | 7/16 | 11/16 | 4.37 | 6.71 | 11 | 11.2 | 34.11 | 19mm |
| 21319 | 9/16 | 9/16 | 7.54 | 4.37 | 11.99 | 9.8 | 30.68 | 19mm |
| 21302 | 9/16 | 11/16 | 6.71 | 6.71 | 11.99 | 11.2 | 31.8 | 19mm |
| 21303 | 9/16 | 13/16 | 6.71 | 9.6 | 11.99 | 12.8 | 37.39 | 0.875 |
| 21304 | 3/4 | 11/16 | 9.93 | 6.71 | 14 | 11.2 | 35.08 | 0.875 |
| 21305 | 3/4 | 13/16 | 9.6 | 9.6 | 14 | 12.8 | 36.6 | 0.875 |
| 21306 | 3/4 | 1 | 9.93 | 12.29 | 11.13 | 15.49 | 38.3 | 27mm |
| 21322 | 3/4 | 1-3/16 | 9.93 | 15.47 | 14 | 17.02 | 48.54 | 1.25 |
| 21318 | 7/8 | 11/16 | 12.29 | 6.71 | 16 | 11.2 | 35.84 | 27mm |
| 21307 | 7/8 | 13/16 | 9.6 | 9.6 | 16 | 12.8 | 38.71 | 27mm |
| 21308 | 7/8 | 1 | 12.29 | 12.29 | 16 | 15.49 | 43.18 | 27mm |
| 21317 | 7/8 | 1-3/16 | 12.29 | 15.47 | 16 | 17.02 | 51.82 | 1.25 |
| 21320 | 1-1/16 | 13/16 | 15.47 | 9.6 | 18.49 | 12.8 | 44.45 | 1.25 |
| 21309 | 1-1/16 | 1 | 15.47 | 12.29 | 18.49 | 15.49 | 47.19 | 1.25 |
| 21310 | 1-1/16 | 1-3/16 | 15.47 | 15.47 | 18.49 | 17.02 | 48.72 | 1.25 |
| 21311 | 1-1/16 | 1-7/16 | 15.47 | 20.6 | 18.49 | 17.5 | 54.31 | 1.5 |
| 21312 | 1-5/16 | 1-3/16 | 21.44 | 15.47 | 18.49 | 17.02 | 49.73 | 1.5 |
| 21313 | 1-5/16 | 1-7/16 | 21.44 | 20.6 | 18.49 | 17.5 | 50.24 | 1.5 |
| 21314 | 1-5/8 | 1-7/16 | 27.38 | 20.6 | 18.49 | 17.5 | 52.27 | 46mm |

DESIGN DETAILS AND SPECIFICATIONS SUBJECT TO CHANGE WITHOUT PRIOR NOTICE - Whilst every effort has been made to ensure the accuracy of the information supplied herein, Burnett & Hillman cannot be held responsible for any errors or omissions (E&OE)

SAE O'ring boss male x ORFS male
Complete with O'rings & Caps

Nov-21
0902 METRIC

A/F dimensions are imperial unless stated.



| | T1 | T2 | B1 | B2 | L1 | L2 | O/L | A/F |
|-------|-------|---------|-------|-------|-------|------|-------|-------|
| 21315 | 1-5/8 | 1-11/16 | 26.01 | 26.01 | 18.49 | 17.5 | 52.27 | 50mm |
| 21321 | 1-7/8 | 1-11/16 | 33.32 | 26.01 | 15.09 | 17.5 | 49.1 | 55mm |
| 21316 | 1-7/8 | 2 | 32 | 32 | 18.49 | 17.5 | 54.05 | 2.125 |