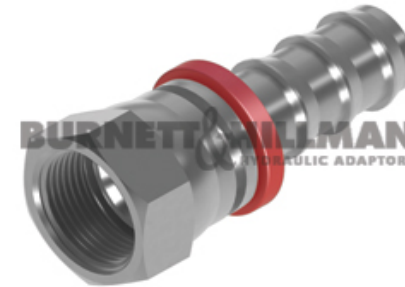
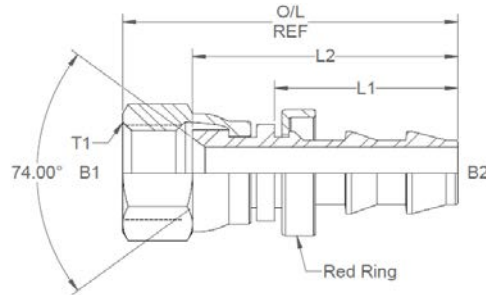


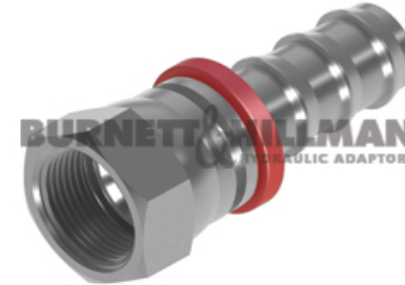
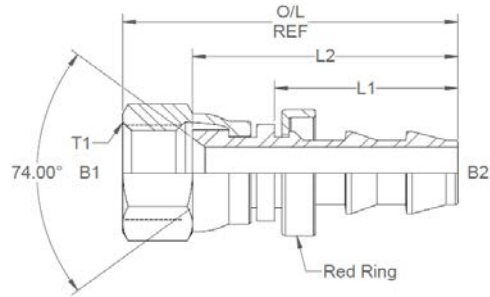
All dimensions are imperial unless stated.



	T1	T2	B1	B2	L1	L2	O/L	A/F
09700	7/16	1/4 PI	0.176	0.176	0.89	1.303	1.67	0.562
09701	9/16	3/8 PI	0.296	0.296	1.027	1.487	1.675	0.687
09705	3/4	3/8 PI	0.39	0.296	1.027	1.615	2.05	0.875
09702	3/4	1/2 PI	0.375	0.375	1.21	1.798	2.244	0.875
09706	7/8	1/2 PI	0.5	0.39	1.21	1.845	2.308	1
09703	7/8	5/8 PI	0.484	0.484	1.655	2.29	2.803	1
09704	1-1/16	3/4 PI	0.593	0.593	1.75	2.427	3.024	1.25
09707	1-5/16	1 PI	0.812	0.75	1.825	2.535	3.14	1.5

DESIGN DETAILS AND SPECIFICATIONS SUBJECT TO CHANGE WITHOUT PRIOR NOTICE - Whilst every effort has been made to ensure the accuracy of the information supplied herein, Burnett & Hillman cannot be held responsible for any errors or omissions (E&OE)

A/F dimensions are imperial unless stated.



	T1	T2	B1	B2	L1	L2	O/L	A/F
09700	7/16	1/4 PI	4.47	4.47	22.61	33.1	42.42	0.562
09701	9/16	3/8 PI	7.52	7.52	26.09	37.77	42.55	0.687
09705	3/4	3/8 PI	9.91	7.52	26.09	41.02	52.07	0.875
09702	3/4	1/2 PI	9.53	9.53	30.73	45.67	57	0.875
09706	7/8	1/2 PI	12.7	9.91	30.73	46.86	58.62	1
09703	7/8	5/8 PI	12.29	12.29	42.04	58.17	71.2	1
09704	1-1/16	3/4 PI	15.06	15.06	44.45	61.65	76.81	1.25
09707	1-5/16	1 PI	20.62	19.05	46.36	64.39	79.76	1.5