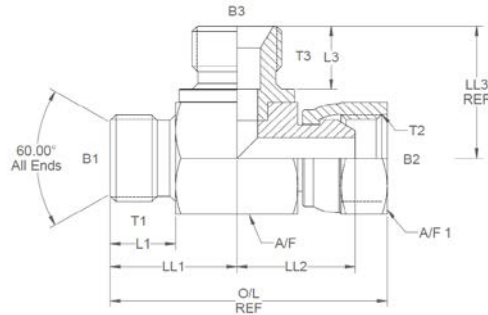


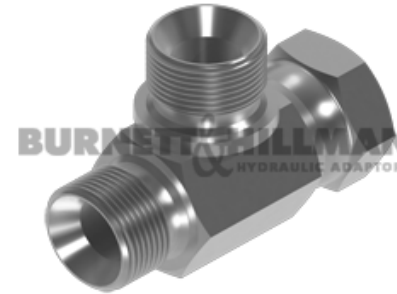
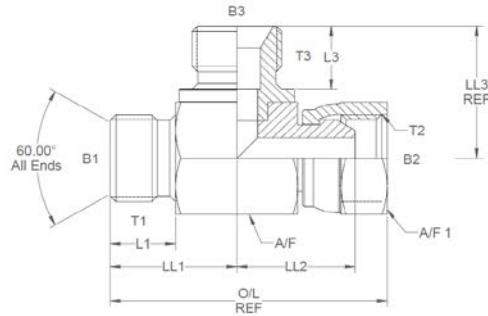
All dimensions are imperial unless stated.



	T1	T2	T3	B1	B2	B3	L1	L3	LL1	LL2	LL3	A/F	A/F1
02033	1/8	1/8	1/8	0.137	0.125	0.137	0.44	0.44	0.77	0.687	0.815	14mm	14mm
02025	1/4	1/4	1/4	0.185	0.172	0.185	0.45	0.45	0.88	0.84	0.934	19mm	19mm
02026	3/8	3/8	3/8	0.312	0.271	0.296	0.52	0.52	1	0.992	1.078	22mm	22mm
02027	1/2	1/2	1/2	0.437	0.375	0.39	0.6	0.6	1.162	1.09	1.256	27mm	27mm
02028	5/8	5/8	5/8	0.562	0.464	0.437	0.7	0.7	1.387	1.187	1.425	30mm	30mm
02029	3/4	3/4	3/4	0.6	0.6	0.562	0.75	0.75	1.48	1.23	1.53	32mm	32mm
02030	1	1	1	0.843	0.797	0.75	0.8	0.8	1.68	1.428	1.767	41mm	41mm
02034	1-1/4	1-1/4	1-1/4	1.125	1.014	0.875	0.8	0.8	1.925	1.735	1.969	50mm	50mm
02020	1-1/4	1-1/4	1-1/4	1.312	1.201	0.96	0.85	0.85	2.225	2.125	2.132	55mm	55mm
02021	2	2	2	1.75	1.703	1.25	1	1	2.65	2.462	2.597	70mm	70mm

DESIGN DETAILS AND SPECIFICATIONS SUBJECT TO CHANGE WITHOUT PRIOR NOTICE - Whilst every effort has been made to ensure the accuracy of the information supplied herein, Burnett & Hillman cannot be held responsible for any errors or omissions (E&OE)

A/F dimensions are imperial unless stated.



	T1	T2	T3	B1	B2	B3	L1	L3	LL1	LL2	LL3	A/F	A/F1
02033	1/8	1/8	1/8	0.137	0.125	0.137	0.44	0.44	0.77	0.687	0.815	14mm	14mm
02025	1/4	1/4	1/4	0.185	0.172	0.185	0.45	0.45	0.88	0.84	0.934	19mm	19mm
02026	3/8	3/8	3/8	0.312	0.271	0.296	0.52	0.52	1	0.992	1.078	22mm	22mm
02027	1/2	1/2	1/2	0.437	0.375	0.39	0.6	0.6	1.162	1.09	1.256	27mm	27mm
02028	5/8	5/8	5/8	0.562	0.464	0.437	0.7	0.7	1.387	1.187	1.425	30mm	30mm
02029	3/4	3/4	3/4	0.6	0.6	0.562	0.75	0.75	1.48	1.23	1.53	32mm	32mm
02030	1	1	1	0.843	0.797	0.75	0.8	0.8	1.68	1.428	1.767	41mm	41mm
02034	1-1/4	1-1/4	1-1/4	1.125	1.014	0.875	0.8	0.8	1.925	1.735	1.969	50mm	50mm
02020	1-1/4	1-1/4	1-1/4	1.312	1.201	0.96	0.85	0.85	2.225	2.125	2.132	55mm	55mm
02021	2	2	2	1.75	1.703	1.25	1	1	2.65	2.462	2.597	70mm	70mm