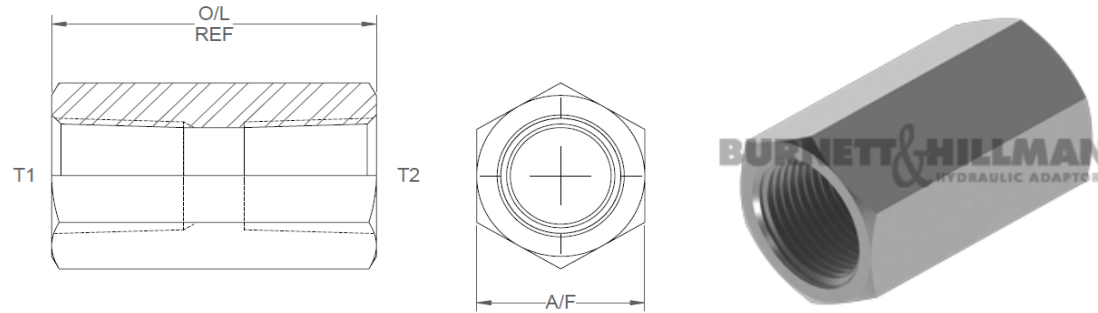
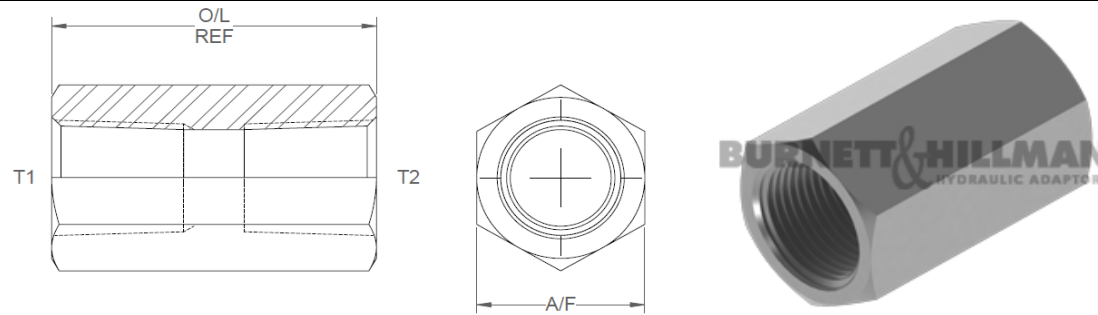


All dimensions are imperial unless stated.



	T1	T2	O/L	A/F
08095	1/8	1/8	1.065	14mm
08096	1/4	1/4	1.35	19mm
08094	3/8	3/8	1.4	22mm
08097	1/2	1/2	1.8	27mm
08099	3/4	3/4	1.8	32mm
08098	1	1	2.2	41mm
08101	1-1/4	1-1/4	2.25	50mm
08102	1-1/2	1-1/2	2.25	55mm
08093	2	2	2.625	70mm
08112	2-1/2	2-1/2	3.3	90mm
08089	3	3	3.31	101.6mm

A/F dimensions are imperial unless stated.



	T1	T2	O/L	A/F
08095	1/8	1/8	27.05	14mm
08096	1/4	1/4	34.29	19mm
08094	3/8	3/8	35.56	22mm
08097	1/2	1/2	45.72	27mm
08099	3/4	3/4	45.72	32mm
08098	1	1	55.88	41mm
08101	1-1/4	1-1/4	57.15	50mm
08102	1-1/2	1-1/2	57.15	55mm
08093	2	2	66.68	70mm
08112	2-1/2	2-1/2	83.82	90mm
08089	3	3	84.07	101.6mm