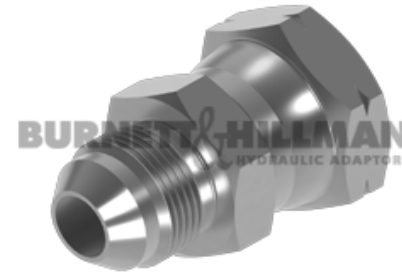
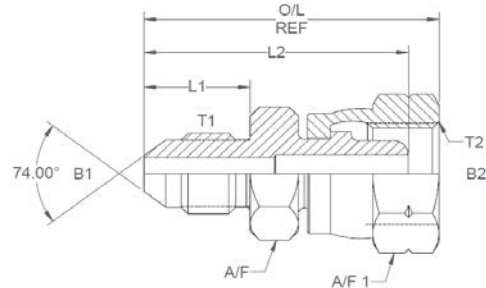


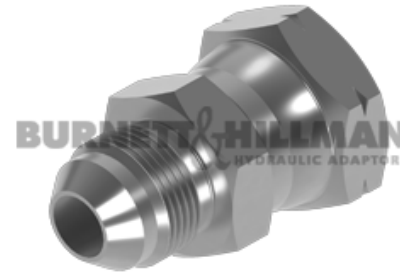
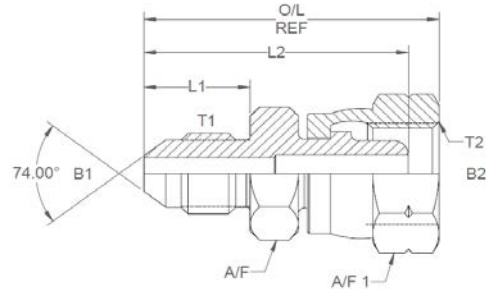
All dimensions are imperial unless stated.



	T1	T2	B1	B2	L1	L2	O/L	A/F	A/F1
01664	7/16	M12 x 1.5	0.172	0.125	0.55	1.3	1.48	0.562	17mm
01665	7/16	M14 x 1.5	0.172	0.203	0.55	1.37	1.53	0.625	19mm
01650	1/2	M12 x 1.5	0.234	0.125	0.55	1.3	1.49	0.562	17mm
01651	9/16	M14 x 1.5	0.297	0.203	0.556	1.376	1.57	0.625	19mm
01652	9/16	M16 x 1.5	0.297	0.281	0.556	1.397	1.63	19mm	22mm
01653	9/16	M18 x 1.5	0.297	0.297	0.556	1.448	1.64	19mm	24mm
01654	9/16	M20 x 1.5	0.297	0.281	0.556	1.448	1.64	0.812	27mm
01655	9/16	M22 x 1.5	0.297	0.297	0.556	1.458	1.69	22mm	27mm
01656	3/4	M16 x 1.5	0.391	0.281	0.657	1.508	1.74	0.812	22mm
01657	3/4	M18 x 1.5	0.391	0.343	0.657	1.559	1.74	0.812	24mm
01658	3/4	M20 x 1.5	0.391	0.281	0.657	1.559	1.76	22mm	27mm
01659	3/4	M22 x 1.5	0.391	0.391	0.657	1.559	1.8	1	27mm
01660	7/8	M16 x 1.5	0.484	0.281	0.758	1.609	1.83	1.01	0.82
01661	7/8	M18 x 1.5	0.484	0.343	0.758	1.66	1.85	1	24mm
01662	7/8	M20 x 1.5	0.484	0.281	0.758	1.66	1.86	1	27mm
01663	7/8	M22 x 1.5	0.484	0.437	0.758	1.67	1.92	1	27mm
01649	1-1/16	M26 x 1.5	0.609	0.59	0.864	1.9	2.13	1.125	32mm

DESIGN DETAILS AND SPECIFICATIONS SUBJECT TO CHANGE WITHOUT PRIOR NOTICE - Whilst every effort has been made to ensure the accuracy of the information supplied herein, Burnett & Hillman cannot be held responsible for any errors or omissions (E&OE)

A/F dimensions are imperial unless stated.



	T1	T2	B1	B2	L1	L2	O/L	A/F	A/F1
01664	7/16	M12 x 1.5	4.37	3.18	13.97	33.02	37.59	0.562	17mm
01665	7/16	M14 x 1.5	4.37	5.16	13.97	34.8	38.86	0.625	19mm
01650	1/2	M12 x 1.5	5.94	3.18	13.97	33.02	37.85	0.562	17mm
01651	9/16	M14 x 1.5	7.54	5.16	14.12	34.95	39.88	0.625	19mm
01652	9/16	M16 x 1.5	7.54	7.14	14.12	35.48	41.4	19mm	22mm
01653	9/16	M18 x 1.5	7.54	7.54	14.12	36.78	41.66	19mm	24mm
01654	9/16	M20 x 1.5	7.54	7.14	14.12	36.78	41.66	0.812	27mm
01655	9/16	M22 x 1.5	7.54	7.54	14.12	37.03	42.93	22mm	27mm
01656	3/4	M16 x 1.5	9.93	7.14	16.69	38.3	44.2	0.812	22mm
01657	3/4	M18 x 1.5	9.93	8.71	16.69	39.6	44.2	0.812	24mm
01658	3/4	M20 x 1.5	9.93	7.14	16.69	39.6	44.7	22mm	27mm
01659	3/4	M22 x 1.5	9.93	9.93	16.69	39.6	45.72	1	27mm
01660	7/8	M16 x 1.5	12.29	7.14	19.25	40.87	46.48	1.01	0.82
01661	7/8	M18 x 1.5	12.29	8.71	19.25	42.16	46.99	1	24mm
01662	7/8	M20 x 1.5	12.29	7.14	19.25	42.16	47.24	1	27mm
01663	7/8	M22 x 1.5	12.29	11.1	19.25	42.42	48.77	1	27mm
01649	1-1/16	M26 x 1.5	15.47	14.99	21.95	48.26	54.1	1.125	32mm

DESIGN DETAILS AND SPECIFICATIONS SUBJECT TO CHANGE WITHOUT PRIOR NOTICE - Whilst every effort has been made to ensure the accuracy of the information supplied herein, Burnett & Hillman cannot be held responsible for any errors or omissions (E&OE)