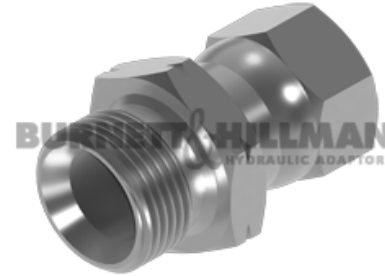
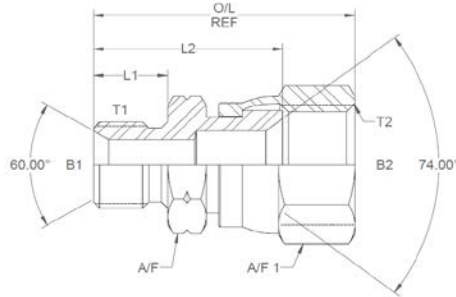


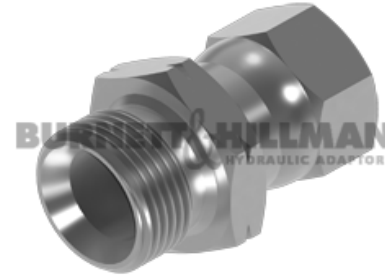
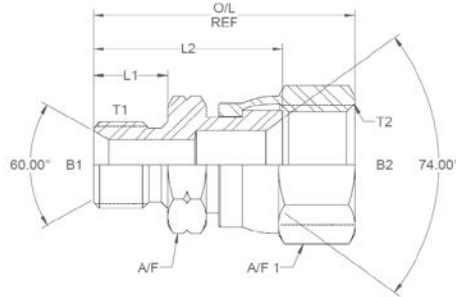
All dimensions are imperial unless stated.



	T1	T2	B1	B2	L1	L2	O/L	A/F	A/F1
01625	M12 x 1.5	1/2	0.197	0.197	0.49	1.069	1.45	17mm	0.625
01639	M12 x 1.5	7/16	0.197	0.176	0.49	1.05	1.39	0.6	0.562
01626	M14 x 1.5	9/16	0.296	0.296	0.49	1.1	1.5	19mm	0.687
01627	M16 x 1.5	9/16	0.375	0.296	0.52	1.15	1.54	22mm	0.687
01628	M16 x 1.5	3/4	0.375	0.375	0.52	1.278	1.72	22mm	0.875
01629	M16 x 1.5	7/8	0.375	0.375	0.52	1.325	1.86	22mm	1
01630	M18 x 1.5	9/16	0.437	0.296	0.52	1.15	1.55	24mm	0.687
01631	M18 x 1.5	3/4	0.437	0.39	0.52	1.278	1.72	22mm	0.875
01632	M18 x 1.5	7/8	0.437	0.437	0.52	1.325	1.84	22mm	1
01633	M20 x 1.5	9/16	0.5	0.296	0.52	1.15	1.57	1.01	0.687
01634	M20 x 1.5	3/4	0.5	0.39	0.52	1.278	1.73	1.01	0.875
01638	M20 x 1.5	7/8	0.5	0.5	0.52	1.325	1.86	1.01	1
01635	M22 x 1.5	9/16	0.562	0.296	0.54	1.17	1.56	27mm	0.687
01636	M22 x 1.5	3/4	0.562	0.39	0.54	1.298	1.76	27mm	0.875
01637	M22 x 1.5	7/8	0.562	0.5	0.54	1.345	1.86	27mm	1

DESIGN DETAILS AND SPECIFICATIONS SUBJECT TO CHANGE WITHOUT PRIOR NOTICE - Whilst every effort has been made to ensure the accuracy of the information supplied herein, Burnett & Hillman cannot be held responsible for any errors or omissions (E&OE)

A/F dimensions are imperial unless stated.



	T1	T2	B1	B2	L1	L2	O/L	A/F	A/F1
01625	M12 x 1.5	1/2	5	5	12.45	27.15	36.83	17mm	0.625
01639	M12 x 1.5	7/16	5	4.47	12.45	26.67	35.31	0.6	0.562
01626	M14 x 1.5	9/16	7.52	7.52	12.45	27.94	38.1	19mm	0.687
01627	M16 x 1.5	9/16	9.53	7.52	13.21	29.21	39.12	22mm	0.687
01628	M16 x 1.5	3/4	9.53	9.53	13.21	32.46	43.69	22mm	0.875
01629	M16 x 1.5	7/8	9.53	9.53	13.21	33.66	47.24	22mm	1
01630	M18 x 1.5	9/16	11.1	7.52	13.21	29.21	39.37	24mm	0.687
01631	M18 x 1.5	3/4	11.1	9.91	13.21	32.46	43.69	22mm	0.875
01632	M18 x 1.5	7/8	11.1	11.1	13.21	33.66	46.74	22mm	1
01633	M20 x 1.5	9/16	12.7	7.52	13.21	29.21	39.88	1.01	0.687
01634	M20 x 1.5	3/4	12.7	9.91	13.21	32.46	43.94	1.01	0.875
01638	M20 x 1.5	7/8	12.7	12.7	13.21	33.66	47.24	1.01	1
01635	M22 x 1.5	9/16	14.27	7.52	13.72	29.72	39.62	27mm	0.687
01636	M22 x 1.5	3/4	14.27	9.91	13.72	32.97	44.7	27mm	0.875
01637	M22 x 1.5	7/8	14.27	12.7	13.72	34.16	47.24	27mm	1

DESIGN DETAILS AND SPECIFICATIONS SUBJECT TO CHANGE WITHOUT PRIOR NOTICE - Whilst every effort has been made to ensure the accuracy of the information supplied herein, Burnett & Hillman cannot be held responsible for any errors or omissions (E&OE)