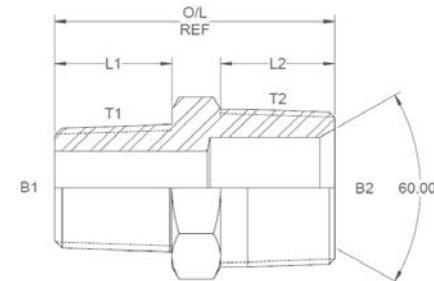
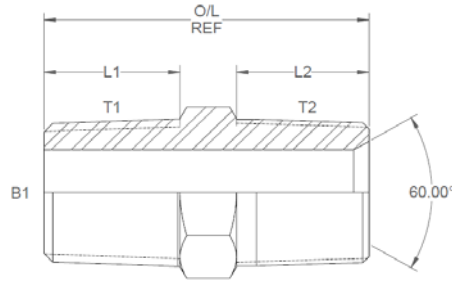


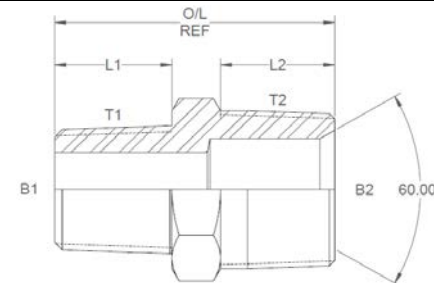
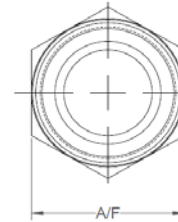
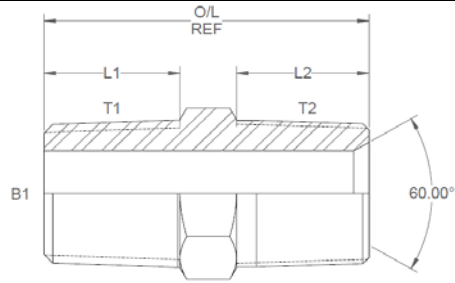
All dimensions are imperial unless stated.



	T1	T2	B1	B2	L1	L2	O/L	A/F
10016	1/8	1/8	0.186		0.41	0.38	1.02	0.437
10012	1/8	1/4	0.186	0.25	0.41	0.56	1.27	0.562
10013	1/4	1/8	0.25	0.186	0.58	0.38	1.26	0.562
10000	1/4	1/4	0.25		0.58	0.56	1.44	0.562
10008	1/4	3/8	0.25	0.375	0.58	0.56	1.44	0.687
10033	1/4	3/4	0.25	0.687	0.58	0.75	1.73	27mm
10039	1/4	1	0.25	0.843	0.64	0.97	2.04	1.375
10009	3/8	1/4	0.375	0.25	0.59	0.56	1.45	0.687
10001	3/8	3/8	0.375		0.59	0.56	1.45	0.687
10017	3/8	1/2	0.393		0.59	0.75	1.64	0.92
10032	3/8	3/4	0.375	0.687	0.67	0.75	1.84	27mm
10038	1/2	1/4	0.5	0.25	0.76	0.56	1.67	22mm
10002	1/2	1/2	0.5		0.76	0.75	1.83	22mm
10022	1/2	3/4	0.5	0.687	0.87	0.75	1.96	27mm
10037	1/2	1	0.5	0.843	0.77	0.97	2.19	1.375
10036	3/4	1/4	0.687	0.25	0.87	0.56	1.85	27mm
10003	3/4	3/4	0.687		0.77	0.75	1.94	27mm
10015	3/4	1	0.659	0.843	0.77	0.97	2.19	1.375
10035	1	1/4	0.875	0.25	1.08	0.56	2.09	1.375
10034	1	1/2	0.875	0.5	0.99	0.75	2.19	1.375

DESIGN DETAILS AND SPECIFICATIONS SUBJECT TO CHANGE WITHOUT PRIOR NOTICE - Whilst every effort has been made to ensure the accuracy of the information supplied herein, Burnett & Hillman cannot be held responsible for any errors or omissions (E&OE)

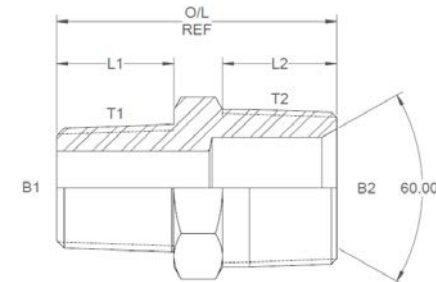
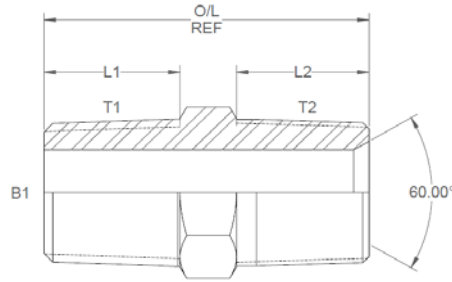
All dimensions are imperial unless stated.



	T1	T2	B1	B2	L1	L2	O/L	A/F
10018	1	34	0.843	0.687	1.08	0.75	2.33	1.375
10004	1	1	0.843		0.99	0.97	2.46	1.375
10027	1	1-1/4	0.843	1.203	0.99	0.97	2.46	1.75
10020	1	2	0.875	1.812	0.99	1.03	2.52	65mm
10031	1-1/4	1	1.203	0.843	1.1	0.97	2.57	46mm
10005	1-1/4	1-1/4	1.203		1.1	0.97	2.57	46mm
10011	1-1/2	1-1/4	1.312	1.203	1.17	0.97	2.69	50mm
10030	1-1/2	1	1.312	0.843	1.17	0.97	2.65	50mm
10006	1-1/2	1-1/2	1.312		1.17	1	2.67	50mm
10023	1-1/2	2	1.312	1.812	1.17	1.03	2.72	65mm
10019	2	1	1.812	0.843	1.18	0.97	2.7	70mm
10014	2	1-1/2	1.812	1.312	1.18	1	2.73	65mm
10007	2	2	1.812		1.18	1.03	2.76	65mm
10026	2-1/2	2	2.375	1.812	1.562	1.03	3.22	3.25
10010	2-1/2	2-1/2	2.375	2.25	1.562	1.52	3.71	3.25
10025	3	2	2.75	1.812	1.562	1.03	3.217	90mm
10021	3	3	2.625		1.562	1.6	3.787	90mm
10024	4	4	3.75	3.625	1.68	1.74	4.22	4.75

DESIGN DETAILS AND SPECIFICATIONS SUBJECT TO CHANGE WITHOUT PRIOR NOTICE - Whilst every effort has been made to ensure the accuracy of the information supplied herein, Burnett &amp; Hillman cannot be held responsible for any errors or omissions (E&amp;OE)

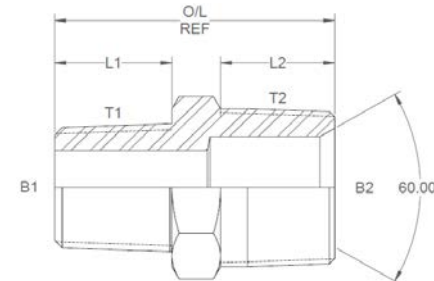
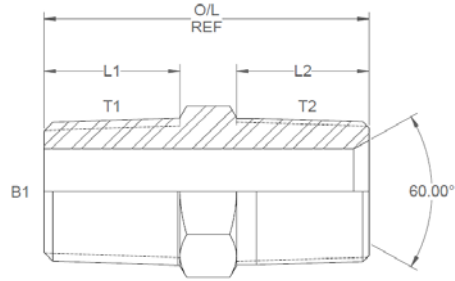
A/F dimensions are imperial unless stated.



	T1	T2	B1	B2	L1	L2	O/L	A/F
10016	1/8	1/8	4.72		10.41	9.65	25.91	0.437
10012	1/8	1/4	4.72	6.35	10.41	14.22	32.26	0.562
10013	1/4	1/8	6.35	4.72	14.73	9.65	32.00	0.562
10000	1/4	1/4	6.35		14.73	14.22	36.58	0.562
10008	1/4	3/8	6.35	9.53	14.73	14.22	36.58	0.687
10033	1/4	3/4	6.35	17.45	14.73	19.05	43.94	27mm
10039	1/4	1	6.35	21.41	16.26	24.64	51.82	1.375
10009	3/8	1/4	9.53	6.35	14.99	14.22	36.83	0.687
10001	3/8	3/8	9.53		14.99	14.22	36.83	0.687
10017	3/8	1/2	9.98		14.99	19.05	41.66	0.92
10032	3/8	3/4	9.53	17.45	17.02	19.05	46.74	27mm
10038	1/2	1/4	12.70	6.35	19.30	14.22	42.42	22mm
10002	1/2	1/2	12.70		19.30	19.05	46.48	22mm
10022	1/2	3/4	12.70	17.45	22.10	19.05	49.78	27mm
10037	1/2	1	12.70	21.41	19.56	24.64	55.63	1.375
10036	3/4	1/4	17.45	6.35	22.10	14.22	46.99	27mm
10003	3/4	3/4	17.45		19.56	19.05	49.28	27mm
10015	3/4	1	16.74	21.41	19.56	24.64	55.63	1.375
10035	1	1/4	22.23	6.35	27.43	14.22	53.09	1.375
10034	1	1/2	22.23	12.70	25.15	19.05	55.63	1.375

DESIGN DETAILS AND SPECIFICATIONS SUBJECT TO CHANGE WITHOUT PRIOR NOTICE - Whilst every effort has been made to ensure the accuracy of the information supplied herein, Burnett & Hillman cannot be held responsible for any errors or omissions (E&OE)

A/F dimensions are imperial unless stated.



	T1	T2	B1	B2	L1	L2	O/L	A/F
10018	1	34	21.41	17.45	27.43	19.05	59.18	1.375
10004	1	1	21.41		25.15	24.64	62.48	1.375
10027	1	1-1/4	21.41	30.56	25.15	24.64	62.48	1.75
10020	1	2	22.23	46.02	25.15	26.16	64.01	65mm
10031	1-1/4	1	30.56	21	28	25	65	46mm
10005	1-1/4	1-1/4	30.56		27.94	24.64	65.28	46mm
10011	1-1/2	1-1/4	33.32	30.56	29.72	24.64	68.33	50mm
10030	1-1/2	1	33.32	21.41	29.72	24.64	67.31	50mm
10006	1-1/2	1-1/2	33.32		29.72	25.40	67.82	50mm
10023	1-1/2	2	33.32	46.02	29.72	26.16	69.09	65mm
10019	2	1	46.02	21.41	29.97	24.64	68.58	70mm
10014	2	1-1/2	46.02	33.32	29.97	25.40	69.34	65mm
10007	2	2	46.02		29.97	26.16	70.10	65mm
10026	2-1/2	2	60.33	46.02	39.67	26.16	81.79	3.25
10010	2-1/2	2-1/2	60.33	57.15	39.67	38.61	94.23	3.25
10025	3	2	69.85	46.02	39.67	26.16	81.71	90mm
10021	3	3	66.68		39.67	40.64	96.19	90mm
10024	4	4	95.25	92.08	42.67	44.20	107.19	4.75

DESIGN DETAILS AND SPECIFICATIONS SUBJECT TO CHANGE WITHOUT PRIOR NOTICE - Whilst every effort has been made to ensure the accuracy of the information supplied herein, Burnett & Hillman cannot be held responsible for any errors or omissions (E&OE)