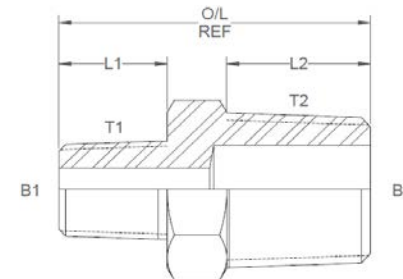
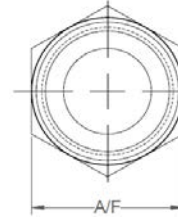
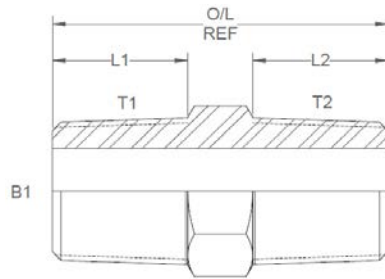


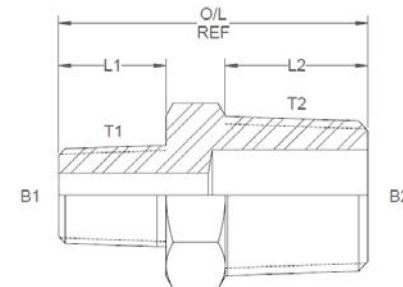
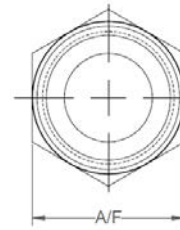
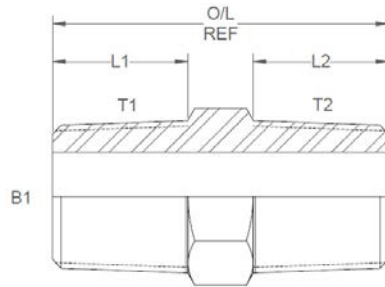
All dimensions are imperial unless stated.



	T1	T2	B1	B2	L1	L2	O/L	A/F
00410	1/8	1/8	0.187		0.41	0.41	1.07	0.437
00412	1/8	1/4	0.187	0.25	0.41	0.58	1.3	0.562
00400	1/8	3/8	0.187	0.375	0.437	0.67	1.427	0.687
00401	1/4	1/4	0.25		0.58	0.58	1.46	0.562
00414	1/4	3/8	0.25	0.375	0.58	0.59	1.47	0.687
00411	1/4	1/2	0.25	0.5	0.58	0.76	1.66	22mm
00402	3/8	3/8	0.375		0.59	0.59	1.5	0.687
00403	3/8	1/2	0.375	0.5	0.59	0.76	1.67	22mm
00404	1/2	1/2	0.5		0.76	0.76	1.84	22mm
00398	1/2	5/8	0.5	0.593	0.87	0.87	2.09	1
00417	1/2	3/4	0.5	0.687	0.76	0.77	1.95	27mm
00395	1/2	1	0.5	0.875	0.76	0.99	2.25	1.375
00415	5/8	5/8	0.593		0.87	0.87	2.09	1
00405	3/4	3/4	0.687		0.77	0.77	1.9	27mm
00416	3/4	1	0.687	0.875	0.77	0.99	2.26	1.375
00423	3/4	1-1/4	0.687	1.203	0.77	1	2.27	1.75
00406	1	1	0.875		0.99	0.99	2.48	1.375
00424	1	1-1/4	0.875	1.203	0.99	1	2.49	1.75
00413	1	1-1/2	0.875	1.312	0.99	1.17	2.67	50mm
00407	1-1/4	1-1/4	1.203		1	1	2.5	1.75

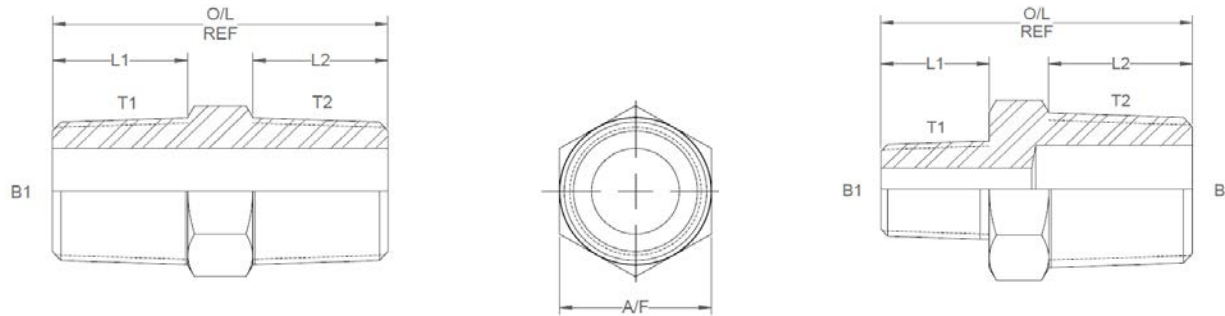
DESIGN DETAILS AND SPECIFICATIONS SUBJECT TO CHANGE WITHOUT PRIOR NOTICE - Whilst every effort has been made to ensure the accuracy of the information supplied herein, Burnett & Hillman cannot be held responsible for any errors or omissions (E&OE)

All dimensions are imperial unless stated.



	T1	T2	B1	B2	L1	L2	O/L	A/F
00419	1-1/4	1-1/2	1.203	1.312	1	1.17	2.7	50mm
00421	1-1/4	2	1.203	1.812	1	1.18	2.73	65mm
00408	1-1/2	1-1/2	1.312		1.17	1.17	2.89	50mm
00422	1-1/2	2	1.312	1.812	1.17	1.18	2.9	65mm
00397	1-1/2	2-1/2	0	0	0	0	0	0
00409	2	2	1.812		1.18	1.18	2.91	65mm
00399	2	2-1/2	1.812	2.375	1.18	1.562	3.367	3.25
00396	2	3	1.812	2.77	1.18	1.55	3.392	90mm
00418	2-1/2	2-1/2	2.375		1.562	1.562	3.749	3.25
00420	3	3	2.77		1.55	1.55	3.725	90mm

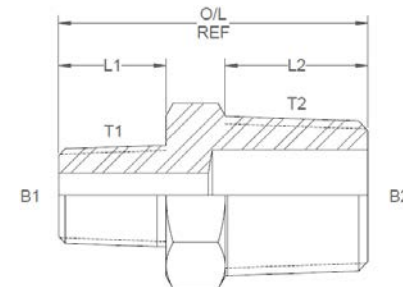
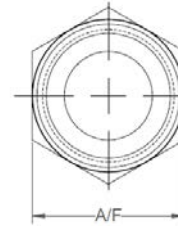
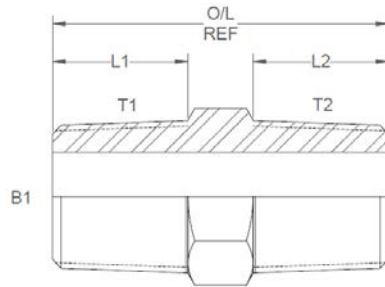
A/F dimensions are imperial unless stated.



	T1	T2	B1	B2	L1	L2	O/L	A/F
00410	1/8	1/8	4.75		10.41	10.41	27.18	0.437
00412	1/8	1/4	4.75	6.35	10.41	14.73	33.02	0.562
00400	1/8	3/8	4.75	9.53	11.10	17.02	36.25	0.687
00401	1/4	1/4	6.35		14.73	14.73	37.08	0.562
00414	1/4	3/8	6.35	9.53	14.73	14.99	37.34	0.687
00411	1/4	1/2	6.35	12.70	14.73	19.30	42.16	22mm
00402	3/8	3/8	9.53		14.99	14.99	38.10	0.687
00403	3/8	1/2	9.53	12.70	14.99	19.30	42.42	22mm
00404	1/2	1/2	12.70		19.30	19.30	46.74	22mm
00398	1/2	5/8	12.70	15.06	22.10	22.10	53.09	1
00417	1/2	3/4	12.70	17.45	19.30	19.56	49.53	27mm
00395	1/2	1	12.70	22.23	19.30	25.15	57.15	1.375
00415	5/8	5/8	15.06		22.10	22.10	53.09	1
00405	3/4	3/4	17.45		19.56	19.56	48.26	27mm
00416	3/4	1	17.45	22.23	19.56	25.15	57.40	1.375
00423	3/4	1-1/4	17.45	30.56	19.56	25.40	57.66	1.75
00406	1	1	22.23		25.15	25.15	62.99	1.375
00424	1	1-1/4	22.23	30.56	25.15	25.40	63.25	1.75
00413	1	1-1/2	22.23	33.32	25.15	29.72	67.82	50mm
00407	1-1/4	1-1/4	30.56		25.40	25.40	63.50	1.75

DESIGN DETAILS AND SPECIFICATIONS SUBJECT TO CHANGE WITHOUT PRIOR NOTICE - Whilst every effort has been made to ensure the accuracy of the information supplied herein, Burnett & Hillman cannot be held responsible for any errors or omissions (E&OE)

A/F dimensions are imperial unless stated.



	T1	T2	B1	B2	L1	L2	O/L	A/F
00419	1-1/4	1-1/2	30.56	33.32	25.40	29.72	68.58	50mm
00421	1-1/4	2	30.56	46.02	25.40	29.97	69.34	65mm
00408	1-1/2	1-1/2	33.32		29.72	29.72	73.41	50mm
00422	1-1/2	2	33.32	46.02	29.72	29.97	73.66	65mm
00397	1-1/2	2-1/2	0	0	0	0	0	0
00409	2	2	46.02		29.97	29.97	73.91	65mm
00399	2	2-1/2	46.02	60.33	29.97	39.67	85.52	3.25
00396	2	3	46.02	70.36	29.97	39.37	86.16	90mm
00418	2-1/2	2-1/2	60.33		39.67	39.67	95.22	3.25
00420	3	3	70.36		39.37	39.37	94.62	90mm