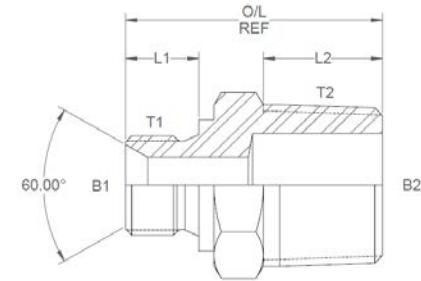
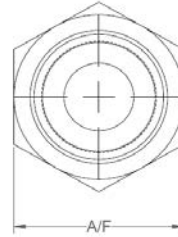
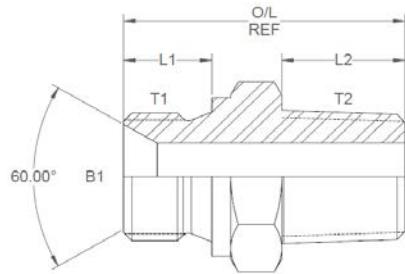


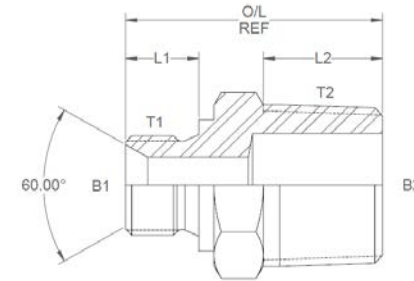
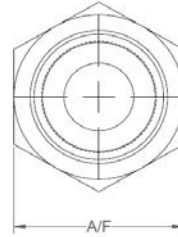
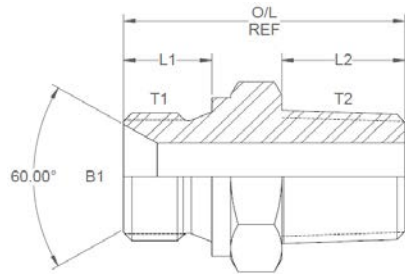
All dimensions are imperial unless stated.



	T1	T2	B1	B2	L1	L2	O/L	A/F
60001	1/8	1/8	0.187		0.315	0.41	1.053	14mm
60002	1/8	1/4	0.187	0.25	0.315	0.64	1.333	14mm
60003	1/8	3/8	0	0	0	0	0	0
60004	1/8	1/2	0	0	0	0	0	0
60005	1/4	1/8	0.25	0.187	0.473	0.41	1.212	19mm
60006	1/4	1/4	0.25		0.473	0.58	1.382	19mm
60007	1/4	3/8	0.185	0.375	0.473	0.58	1.382	19mm
60008	1/4	1/2	0.25	0.5	0.473	0.77	1.642	22mm
60009	1/4	3/4	0.185	0.687	0.473	0.77	1.742	27mm
60010	3/8	1/8	0	0	0	0	0	0
60011	3/8	1/4	0.375	0.25	0.473	0.58	1.451	22mm
60012	3/8	3/8	0.312		0.473	0.59	1.481	22mm
60013	3/8	1/2	0.312	0.5	0.473	0.77	1.661	22mm
60015	3/8	3/4	0.375	0.687	0.473	0.77	1.661	27mm
60016	3/8	1	0	0	0	0	0	0
60017	1/2	1/8	0	0	0	0	0	0
60018	1/2	1/4	0.5	0.25	0.552	0.64	1.61	27mm
60019	1/2	3/8	0.437	0.375	0.552	0.59	1.462	27mm
60020	1/2	1/2	0.437		0.552	0.77	1.76	27mm
60022	1/2	3/4	0.5	0.687	0.552	0.77	1.86	27mm

DESIGN DETAILS AND SPECIFICATIONS SUBJECT TO CHANGE WITHOUT PRIOR NOTICE - Whilst every effort has been made to ensure the accuracy of the information supplied herein, Burnett & Hillman cannot be held responsible for any errors or omissions (E&OE)

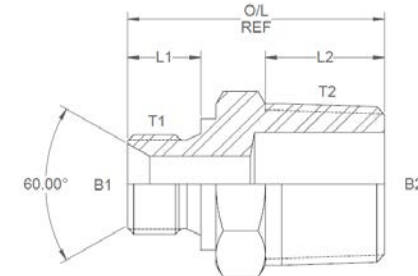
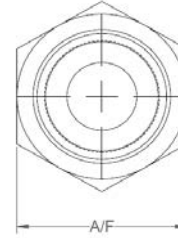
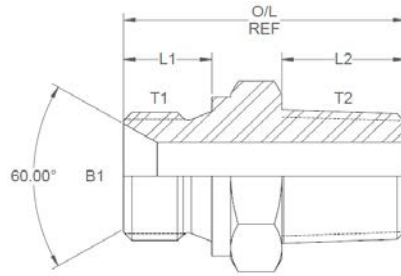
All dimensions are imperial unless stated.



	T1	T2	B1	B2	L1	L2	O/L	A/F
60023	1/2	1	0.5	0.875	0.552	1.08	2.25	1.375
60024	1/2	1-1/4	0.5	1.203	0.552	1	2.17	1.75
60030	3/4	1/4	0	0	0	0	0	0
60031	3/4	3/8	0.687	0.375	0.63	0.67	1.738	32mm
60032	3/4	1/2	0.708	0.5	0.63	0.87	1.938	32mm
60034	3/4	3/4	0.659		0.63	0.77	1.898	32mm
60035	3/4	1	0.659	0.875	0.63	0.99	2.238	1.375
60036	3/4	1-1/4	0.659	1.203	0.63	1	2.248	1.750
60037	3/4	1-1/2	0.708	1.312	0.63	1.17	2.418	50mm
60038	1	3/8	0.875	0.375	0.709	0.67	1.907	41mm
60039	1	1/2	0.875	0.5	0.709	0.87	2.107	41mm
60040	1	3/4	0.875	0.687	0.709	0.77	2.017	41mm
60041	1	1	0.875		0.709	0.99	2.237	41mm
60042	1	1-1/4	0.875	1.203	0.709	1.1	2.427	46mm
60043	1	1-1/2	0.875	1.312	0.709	1.17	2.547	50mm
60044	1	2	0	0	0	0	0	0
60045	1-1/4	3/4	1.203	0.687	0.788	0.87	2.196	50mm
60046	1-1/4	1	1.203	0.875	0.788	1.08	2.396	50mm
60047	1-1/4	1-1/4	1.203		0.788	1.1	2.456	50mm
60048	1-1/4	1-1/2	1.203	1.312	0.788	1.17	2.626	50mm

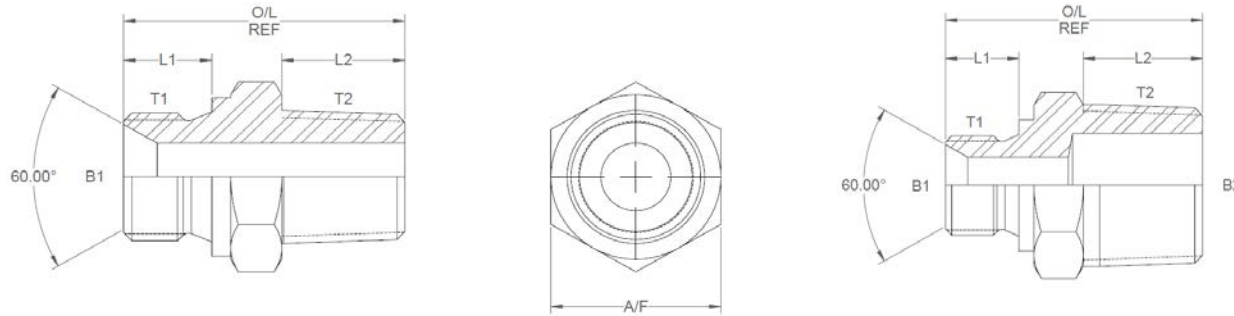
DESIGN DETAILS AND SPECIFICATIONS SUBJECT TO CHANGE WITHOUT PRIOR NOTICE - Whilst every effort has been made to ensure the accuracy of the information supplied herein, Burnett & Hillman cannot be held responsible for any errors or omissions (E&OE)

All dimensions are imperial unless stated.



	T1	T2	B1	B2	L1	L2	O/L	A/F
60049	1-1/4	2	1.203	1.812	0.788	1.18	2.636	65mm
60050	1-1/2	1	1.437	0.875	0.866	1.08	2.564	55mm
60051	1-1/2	1-1/4	1.437	1.203	0.866	1.1	2.584	55mm
60052	1-1/2	1-1/2	1.312		0.866	1.17	2.604	55mm
60053	1-1/2	2	1.312	1.812	0.866	1.18	2.714	65mm
60054	2	1	0	0	0	0	0	0
60055	2	1-1/4	0	0	0	0	0	0
60056	2	1-1/2	1.812	1.312	0.945	1.17	2.753	70mm
60057	2	2	1.812		0.945	1.18	2.763	70mm

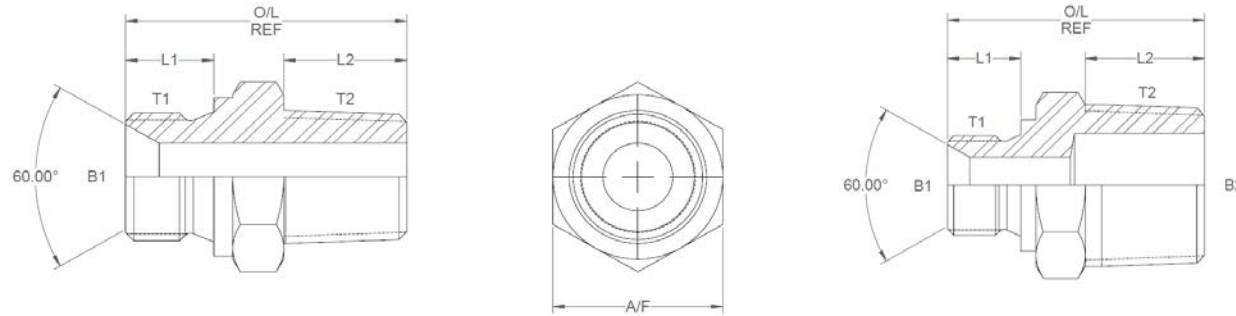
A/F dimensions are imperial unless stated.



	T1	T2	B1	B2	L1	L2	O/L	A/F
60001	1/8	1/8	4.75	0.00	8.00	10.41	26.75	14mm
60002	1/8	1/4	4.75	6.35	8.00	16.26	33.86	14mm
60003	1/8	3/8	0	0	0	0	0	0
60004	1/8	1/2	0	0	0	0	0	0
60005	1/4	1/8	6.35	4.75	12.01	10.41	30.78	19mm
60006	1/4	1/4	6.35	0.00	12.01	14.73	35.10	19mm
60007	1/4	3/8	4.70	9.53	12.01	14.73	35.10	19mm
60008	1/4	1/2	6.35	12.70	12.01	19.56	41.71	22mm
60009	1/4	3/4	4.70	17.45	12.01	19.56	44.25	27mm
60010	3/8	1/8	0	0	0	0	0	0
60011	3/8	1/4	9.53	6.35	12.01	14.73	36.86	22mm
60012	3/8	3/8	7.92	0.00	12.01	14.99	37.62	22mm
60013	3/8	1/2	7.92	12.70	12.01	19.56	42.19	22mm
60015	3/8	3/4	9.53	17.45	12.01	19.56	42.19	27mm
60016	3/8	1	0	0	0	0	0	0
60017	1/2	1/8	0	0	0	0	0	0
60018	1/2	1/4	12.70	6.35	14.02	16.26	40.89	27mm
60019	1/2	3/8	11.10	9.53	14.02	14.99	37.13	27mm
60020	1/2	1/2	11.10	0.00	14.02	19.56	44.70	27mm
60022	1/2	3/4	12.70	17.45	14.02	19.56	47.24	27mm

DESIGN DETAILS AND SPECIFICATIONS SUBJECT TO CHANGE WITHOUT PRIOR NOTICE - Whilst every effort has been made to ensure the accuracy of the information supplied herein, Burnett & Hillman cannot be held responsible for any errors or omissions (E&OE)

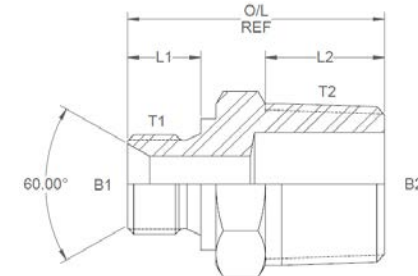
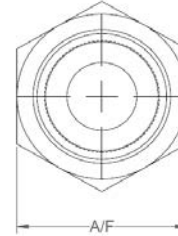
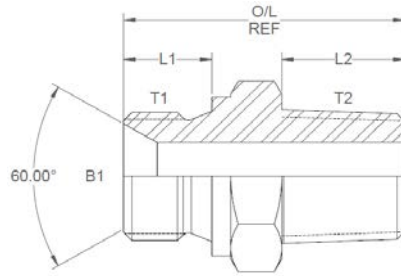
A/F dimensions are imperial unless stated.



	T1	T2	B1	B2	L1	L2	O/L	A/F
60023	1/2	1	12.7	22.23	14.02	27.43	57.15	1.375
60024	1/2	1-1/4	12.7	30.56	14.02	25.40	55.12	1.75
60030	3/4	1/4	0	0	0	0	0	0
60031	3/4	3/8	17.45	9.53	16.00	17.02	44.15	32mm
60032	3/4	1/2	17.98	12.70	16.00	22.10	49.23	32mm
60034	3/4	3/4	16.74		16.00	19.56	48.21	32mm
60035	3/4	1	16.74	22.23	16.00	25.15	56.85	1.375
60036	3/4	1-1/4	16.74	30.56	16.00	25.40	57.10	1.750
60037	3/4	1-1/2	17.98	33.32	16.00	29.72	61.42	50mm
60038	1	3/8	22.23	9.53	18.01	17.02	48.44	41mm
60039	1	1/2	22.23	12.70	18.01	22.10	53.52	41mm
60040	1	3/4	22.23	17.45	18.01	19.56	51.23	41mm
60041	1	1	22.23		18.01	25.15	56.82	41mm
60042	1	1-1/4	22.23	30.56	18.01	27.94	61.65	46mm
60043	1	1-1/2	22.23	33.32	18.01	29.72	64.69	50mm
60044	1	2	0	0	0	0	0	0
60045	1-1/4	3/4	30.56	17.45	20.02	22.10	55.78	50mm
60046	1-1/4	1	30.56	22.23	20.02	27.43	60.86	50mm
60047	1-1/4	1-1/4	30.56	0.00	20.02	27.94	62.38	50mm
60048	1-1/4	1-1/2	30.56	33.32	20.02	29.72	66.70	50mm

DESIGN DETAILS AND SPECIFICATIONS SUBJECT TO CHANGE WITHOUT PRIOR NOTICE - Whilst every effort has been made to ensure the accuracy of the information supplied herein, Burnett & Hillman cannot be held responsible for any errors or omissions (E&OE)

A/F dimensions are imperial unless stated.



	T1	T2	B1	B2	L1	L2	O/L	A/F
60049	1-1/4	2	30.56	46.02	20.02	29.97	66.95	65mm
60050	1-1/2	1	36.5	22.23	22.00	27.43	65.13	55mm
60051	1-1/2	1-1/4	36.5	30.56	22.00	27.94	65.63	55mm
60052	1-1/2	1-1/2	33.32		22.00	29.72	66.14	55mm
60053	1-1/2	2	33.32	46.02	22.00	29.97	68.94	65mm
60054	2	1	0	0	0	0	0	0
60055	2	1-1/4	0	0	0	0	0	0
60056	2	1-1/2	46.02	33.32	24.00	29.72	69.93	70mm
60057	2	2	46.02		24.00	29.97	70.18	70mm