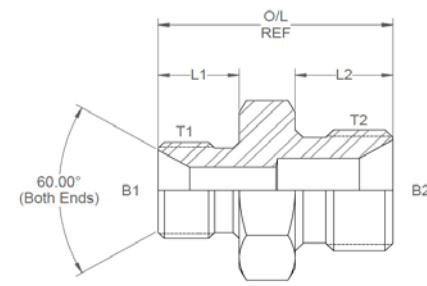
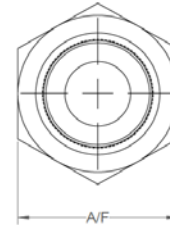
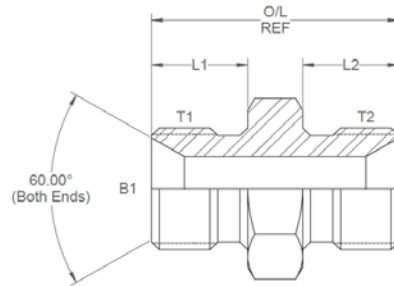


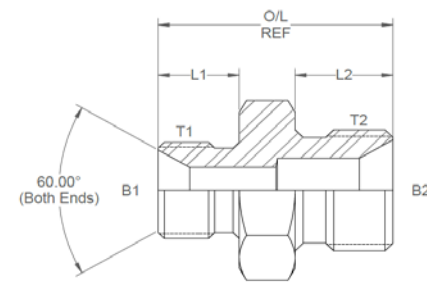
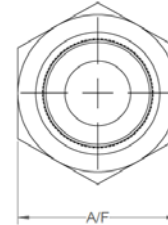
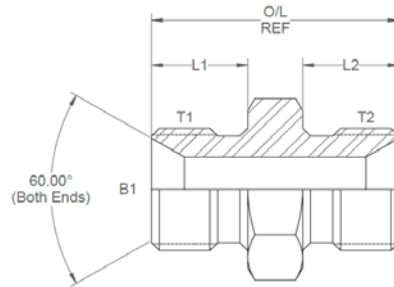
All dimensions are imperial unless stated.



	T1	T2	B1	B2	L1	L2	O/L	A/F
00121	1/8	1/8	0.137		0.44	0.44	1.08	14mm
00100	1/8	1/4	0.137	0.185	0.44	0.45	1.13	19mm
00114	1/4	1/4	0.185		0.48	0.48	1.21	19mm
00117	1/4	3/8	0.185		0.48	0.53	1.29	22mm
00101	1/4	1/2	0.185	0.437	0.48	0.64	1.485	27mm
00120	3/8	3/8	0.312		0.53	0.53	1.34	22mm
00102	3/8	1/2	0.312	0.437	0.53	0.64	1.535	27mm
00103	3/8	3/4	0.312	0.659	0.53	0.74	1.718	32mm
00126	3/8	1	0.312	0.875	0.53	0.965	2.068	41mm
00125	1/2	1/2	0.437		0.64	0.64	1.645	27mm
00124	1/2	5/8	0.437		0.64	0.69	1.695	1.1
00104	1/2	3/4	0.437	0.659	0.64	0.74	1.828	32mm
00116	1/2	1	0.437	0.965	0.64	0.965	2.178	41mm
00105	5/8	5/8	0.562		0.69	0.69	1.745	1.1
00127	5/8	3/4	0.562		0.69	0.74	1.878	32mm
00115	3/4	3/4	0.659		0.74	0.74	1.928	32mm
00106	3/4	1	0.659	0.875	0.74	0.965	2.278	41mm
00107	3/4	1-1/4	0.659	1.125	0.74	0.965	2.435	50mm
00122	3/4	1-1/2	0.659	1.312	0.74	1.065	2.701	55mm
00118	1	1	0.875		0.965	0.965	2.503	41mm

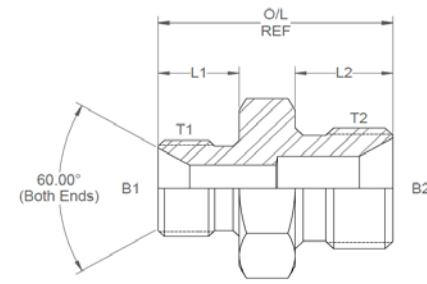
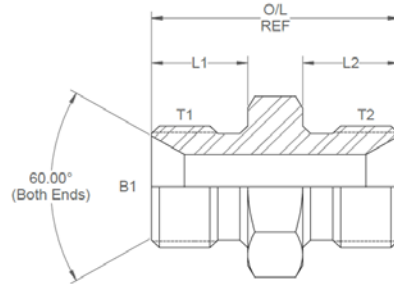
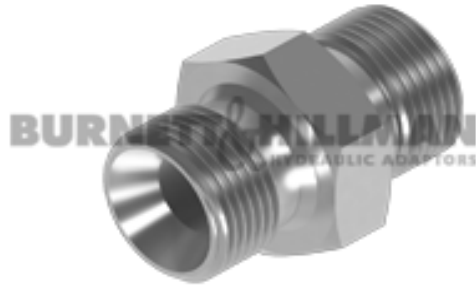
DESIGN DETAILS AND SPECIFICATIONS SUBJECT TO CHANGE WITHOUT PRIOR NOTICE - Whilst every effort has been made to ensure the accuracy of the information supplied herein, Burnett & Hillman cannot be held responsible for any errors or omissions (E&OE)

All dimensions are imperial unless stated.



	T1	T2	B1	B2	L1	L2	O/L	A/F
00119	1	1-1/4	0.875	1.13	0.97	0.97	2.66	50mm
00108	1	1-1/2	0.875	1.31	0.97	1.07	2.93	55mm
00128	1	2	0.875	1.81	0.97	1.07	3.18	70mm
00109	1-1/4	1-1/4	1.125	0.00	0.97	0.97	2.66	50mm
00110	1-1/4	1-1/2	1.125	1.31	0.97	1.07	2.93	55mm
00129	1-1/4	2	1.125	1.81	0.97	1.07	3.18	70mm
00111	1-1/2	1-1/2	1.312	0.00	1.07	1.07	3.03	55mm
00112	1-1/2	2	1.312	1.81	1.07	1.07	3.28	70mm
00113	2	2	1.812	0.00	1.07	1.07	3.28	70mm

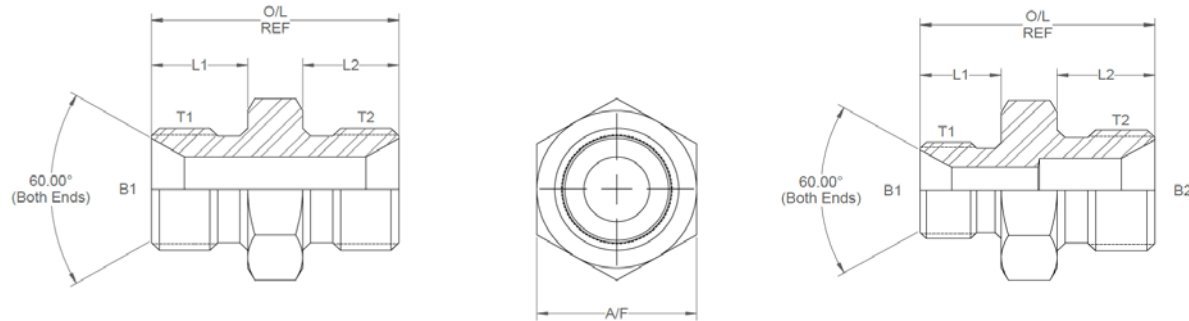
A/F dimensions are imperial unless stated.



	T1	T2	B1	B2	L1	L2	O/L	A/F
00121	1/8	1/8	3.48		11.18	11.18	27.43	14mm
00100	1/8	1/4	3.48	4.70	11.18	11.43	28.70	19mm
00114	1/4	1/4	4.7		12.19	12.19	30.73	19mm
00117	1/4	3/8	4.7		12.19	13.46	32.77	22mm
00101	1/4	1/2	4.7	11.10	12.19	16.26	37.72	27mm
00120	3/8	3/8	7.92		13.46	13.46	34.04	22mm
00102	3/8	1/2	7.92	11.10	13.46	16.26	38.99	27mm
00103	3/8	3/4	7.92	16.74	13.46	18.80	43.64	32mm
00126	3/8	1	7.92	22.23	13.46	24.51	52.53	41mm
00125	1/2	1/2	11.10		16.26	16.26	41.78	27mm
00124	1/2	5/8	11.10		16.26	17.53	43.05	1.1
00104	1/2	3/4	11.10	16.74	16.26	18.80	46.43	32mm
00116	1/2	1	11.10	24.51	16.26	24.51	55.32	41mm
00105	5/8	5/8	14.27		17.53	17.53	44.32	1.1
00127	5/8	3/4	14.27		17.53	18.80	47.70	32mm
00115	3/4	3/4	16.74		18.80	18.80	48.97	32mm
00106	3/4	1	16.74	22.23	18.80	24.51	57.86	41mm
00107	3/4	1-1/4	16.74	28.58	18.80	24.51	61.85	50mm
00122	3/4	1-1/2	16.74	33.32	18.80	27.05	68.61	55mm
00118	1	1	22.23		24.51	24.51	63.58	41mm

DESIGN DETAILS AND SPECIFICATIONS SUBJECT TO CHANGE WITHOUT PRIOR NOTICE - Whilst every effort has been made to ensure the accuracy of the information supplied herein, Burnett & Hillman cannot be held responsible for any errors or omissions (E&OE)

A/F dimensions are imperial unless stated.



	T1	T2	B1	B2	L1	L2	O/L	A/F
00119	1	1-1/4	22.23	28.58	24.51	24.51	67.56	50mm
00108	1	1-1/2	22.23	33.32	24.51	27.05	74.32	55mm
00128	1	2	22.23	46.02	24.51	27.05	80.67	70mm
00109	1-1/4	1-1/4	28.58		24.51	24.51	67.56	50mm
00110	1-1/4	1-1/2	28.58	33.32	24.51	27.05	74.32	55mm
00129	1-1/4	2	28.58	46.02	24.51	27.05	80.72	70mm
00111	1-1/2	1-1/2	33.32		27.05	27.05	76.86	55mm
00112	1-1/2	2	33.32	46.02	27.05	27.05	83.21	70mm
00113	2	2	46.02		27.05	27.05	83.21	70mm